

PUNE | JAIPUR | RAIPUR

A SUBSIDIARY OF [WWW.RADHEYWORLD.COM](http://WWW.RADHEYWORLD.COM)

# ABOUT US

Founded in 2021, our company's partners bring together over 3 decades (35 years) of experience in metallurgy. We have entered the market with the essential products designed to enhance the quality and efficiency of the steelmaking process.

In support of the "MAKE IN INDIA" initiative, we offer the highest quality materials at the most competitive prices. Our manufacturing facility is capable of producing over 105000 MTPA of finished product with utmost quality.

We have always emphasized efficiency and innovation, which is why we continuously improve our manufacturing processes and source the highest quality raw materials from around the globe. Our additives, made from aluminum, carbon, and fluorides, enhance both the quality and efficiency of the steel industry.

# WHY US?

Our strength lies in our work. We have worked in the field to make sure that we cater to our clients' needs and provide the best service. We bring the expertise of over three decades to streamline and enhance your productivity and improve the quality of your finished product.

## 35+ Years of Industry Expertise

- Global Sourcing of High-Quality Raw Materials
- Consistent Focus on Efficiency & Innovation
- Trusted by Major Steel Manufacturers Across India

OUR STRATEGIC PARTNERSHIPS WITH INDUSTRIES THAT SHARE OUR VISION, HAS GIVEN US THE EDGE IN THE MARKET.

## OUR SISTER CONCERNS:

1. JAJOO EXIM PRIVATE LIMITED, JAIPUR
2. SES LLP, BHOPAL
3. JAJOO EXIM X DALMIA REFRACTORIES

**WE PROVIDE A ONE STOP SOLUTION STARTING FROM FURNACE TO CASTING SOLUTIONS.**

[WWW.RADHEYWORLD.COM](http://WWW.RADHEYWORLD.COM)

# RAW MATERIALS

Our sourcing philosophy combines responsibility with precision: every raw material is traced, assessed, and approved against rigorous environmental, social, and quality criteria. Integrated testing and controlled processing safeguard purity, stability, and consistency, so customers receive the same high-performing product every time.

Importing the raw material or sourcing it locally, we don't leave any stones unturned when it comes to finding the right quality.

<u>PRODUCT APPLICATION</u>	<u>PRODUCT TYPE</u>
FURNACE	REFRACTORIES, FERRO ALLOYS AND DEOXIDISERS
LADLE	REFRACTORIES, LADLE COVERING
CONTINUOS CASTER	CASTING SOLUTIONS, NOZZLE COMPOUNDS
DRI KILNS	KILN REFRACTORIES

# PRODUCT RANGE

## ALUMINIUM

<u>PRODUCT</u>	<u>SIZE</u>	<u>GRADE RANGE</u>
FLUX	SUPER FINES (>150 MESH)	80% AL <sub>2</sub> O <sub>3</sub>
INGOTS/NOTCH BARS	300GMS TO 20KG BARS	85% TO 98% AL
SHOTS	3-5MM	98% AL
DROSS	3MM TO 250MM	85% TO 98% AL

WWW.RADHEYWORLD.COM

# ACIDIC REFRACTORIES

## SILICA RAMMING MASS

### BORON OXIDE PREMIX

WE DEVISE THE RIGHT GRANULAR STRUCTURE SUITABLE FOR INDIVIDUAL FURNACE CAPACITY SO OUR CLIENTS CAN ACHIEVE THE BEST RESULTS IN A SINGLE LINING

### BORIC ACID PREMIX

ALONG WITH THE RIGHT GRANULAR DISTRIBUTION, A THOROUGH AND EVEN MIXING OF BORIC ACID HELPS GIVE THE BEST RESULTS DURING THE STEEL RECYCLING PROCESS

### POST MIX RAMMING MASS

WE ADHERE TO THE STRICT DEMANDS FROM OUR CLIENTS. A SPECIAL REQUIREMENT OF SILICA RAMMING MASS WITHOUT THE ADDITION OF BINDERS.

# CARBON RAISERS

	<u>METCOKE</u>	<u>CARBON BLOCKS</u>	<u>ANODES</u>	<u>ANTHRACITE COAL</u>	<u>CALCINED PET COKE</u>	<u>GRAPHITE</u>
<u>FIXED CARBON</u>	60% TO 82%	57% TO 63%	97%	85%	98%	98.5%
<u>SIZE</u>	0 TO 20MM	10 TO 100MM	50 TO 150MM	0 TO 9MM	0 TO 10MM	0 TO 20MM
<u>SULPHUR</u>	0.6%	LESS THAN 1%	0.7%	0.7%	0.6% TO 1.5%	0.05%
<u>ASH</u>	9% TO 25%	LESS THAN 12%	LESS THAN 3%	LESS THAN 9%	LESS THAN 1%	LESS THAN 1%
<u>MOISTURE</u>	LESS THAN 5%	LESS THAN 2%	LESS THAN 1%	7% TO 10%	LESS THAN 1%	LESS THAN 1%

# FERRO ALLOYS

	<u>FERRO SILICO MANGANESE</u>	<u>FERRO MANGANESE</u>	<u>FERRO SILICON</u>
GRADE	MN: 57% TO 65% SI: 12% TO 16%	70% TO 78% MANGANESE	60% TO 75% SILICON
SIZE	10MM TOP 150MM	70MM TO 150MM	70MM TO 150MM
CARBON	1% TO 2.5%	6% TO 8%	LESS THAN 0.5%

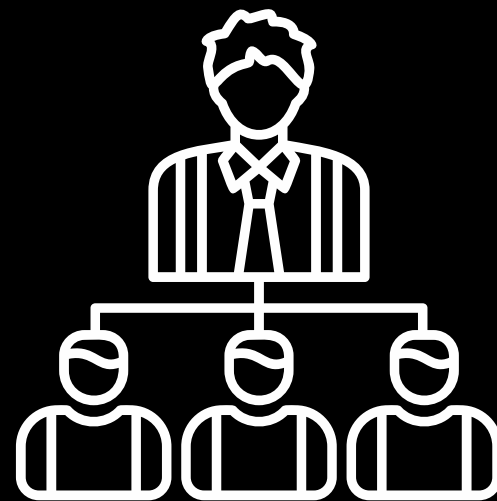
WE WILL SOON BE MANUFACTURING PIG IRON AS WELL !!!

# FLUORIDES, CASTING POWDER AND NOZZLE FILLING COMPOUND

<u>PRODUCT</u>	<u>USE CASE</u>	<u>GRADE RANGE</u>
FLUORSPAR	SLAG CONDITIONING	65% CAF2 TO 98% CAF2
CASTNG POWDER	MOULD TUBE	28% TO 32% SIO2 25% TO 27% CAO 7.5% TO 10% AL2O3
NOZZLE FILLING COMPOUND	LADLE OPENING	SILICA, CHROMITE AND ZIRCONIUM BASED

## OTHER VENTURES UNDER RADHEY WORLD:

1. LUHSHEN CLEANING SOLUTIONS
2. LUXLABS PVT LTD
3. RENASCENT BITWISE ⓘ PVT LTD  
(WEALTH MANAGEMENT SERVICES)





### **OUR PRESENCE:**

- 1. PUNE**
- 2. AHMEDABAD**
- 3. JAIPUR**
- 4. RAIPUR**



**OFFICE:** SECOND FLOOR, JEWEL SQUARE  
MALL, KOREGAON PARK, PUNE 411001



**CONTACT US:** +91 78876 99421 / +91 70286 46421



**EMAIL:** ADMIN@RADHEYWORLD.COM,  
RADHEYENTSALES@GMAIL.COM